

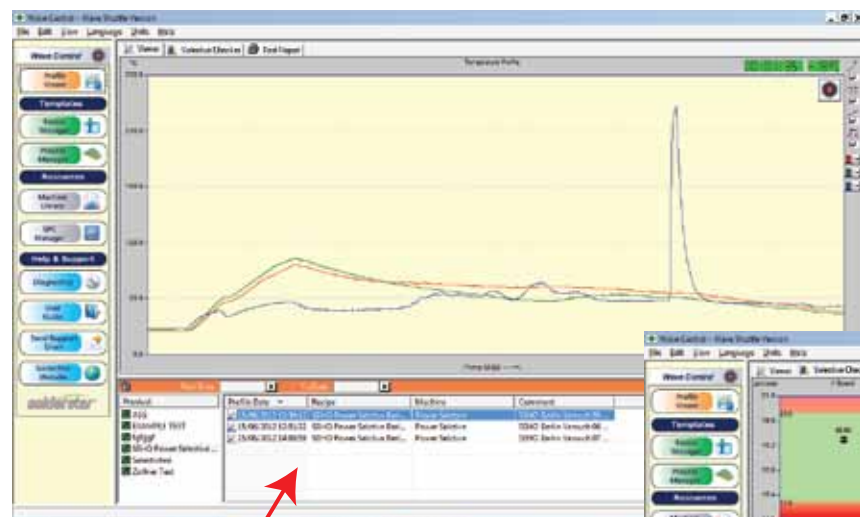


## System Features

- High quality 10mm fixture provides a fixed robust platform for initial process set up, periodic checking and comparison
- Titanium contact sensors give highest measurement accuracy on Wave Height and main and chip wave parameters
- Fully enclosed and protected datalogger and contact measurement system ideal for hotter lead-free processes
- Connectivity via standard USB cables or 2.4Ghz Wireless Telemetry
- Dedicated Wave Central PC analysis software with product database and integrated SPC charting package

## Precise measurement and control for Selective Soldering machines

Designed to work in conjunction with an existing SolderStar Pro temperature profiling package, the SolderStar WaveSelective provides detailed analysis of all key parameters of the selective soldering process. Pre-heat temperature profiles, solder pot and solder nozzle measurement sensors are combined in one easy to use wave solder fixture, this unique tool allows manufacturers a quickly perform setup and verification profiles of their selective soldering machines



PROFILE GRAPH  
AND DATA MANAGEMENT  
TOOLS

SELECTIVE PROCESS  
CHECKER CHARTS FOR  
RAPID GOOD/BAD ANALYSIS



Captures all key parameters in one pass through the selective soldering machine

[www.solderstar.com](http://www.solderstar.com)

Parameters Measured

Solder Nozzle / PCB Contact Time
Solder Nozzle Wave Height / Immersion Depth
X Speed
Y Speed
Solder Pot temperature
Peak PCB Topside Temperature
Heating Rates

Technical Data

Construction	CDM Anti Static 10mm
Size/Weight	300 x300 x 30mm (max) 1kg
Dwell Contacts	8 measured by on-pallet system
Contact sampling	All contacts 100 times per second
Timing accuracy	+/- 0.01 seconds
Wave Height Array	0.2 - 2.4mm
Temperature	5 channels measured by Neptune SL 2 x PCB top side L&R TYPE K 1 x Solder Pot TYPE K 2 x User PCB/Auxiliary TYPE K
Temp Accuracy	+/- 1°C
Temp Resolution	0.02°C ( 0.1°C displayed on graph)

Wireless Telemetry Option

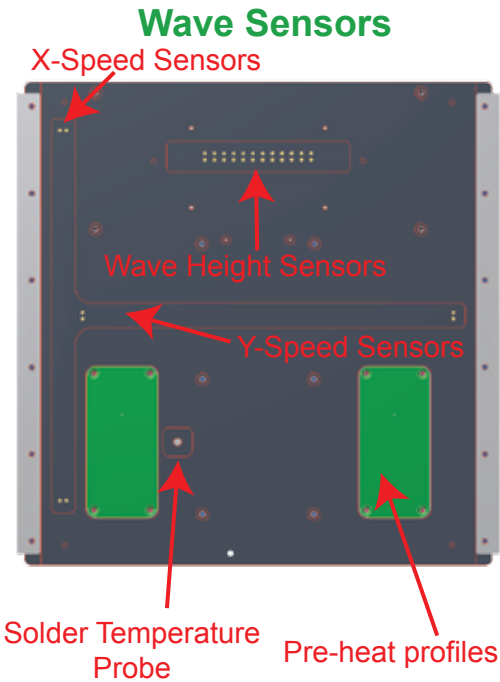
Frequency	2.4GHZ Transceiver
Channels	128 Individual Channels
Protocol	Zigbee PRO - Duplex Transmission



Software

Compatibility	Windows™ XP Vista/Windows 7 32 & 64 Bit
Language Support	English, French, German, Italian, Korean, Portuguese, Spanish, Simplified & Traditional Chinese

For further information and demonstration software visit [www.solderstar.com](http://www.solderstar.com)



Standard Equipment

- 300mm x 300mm Pallet
- PC Software on CDROM
- Equipment Case

Optional Equipment

- 2.4Ghz Wireless Telemetry

Custom width pallets are available to special order to meet any exact requirement of your production lines.

Specification subject to change without notification



REFLOW • WAVE • VAPOUR

SolderStar Ltd  
Manchester UK  
Tel: +44 (0)1706 354846  
Fax: +44 (0)1706 675296  
Email: [info@solderstar.com](mailto:info@solderstar.com)  
[www.solderstar.com](http://www.solderstar.com)